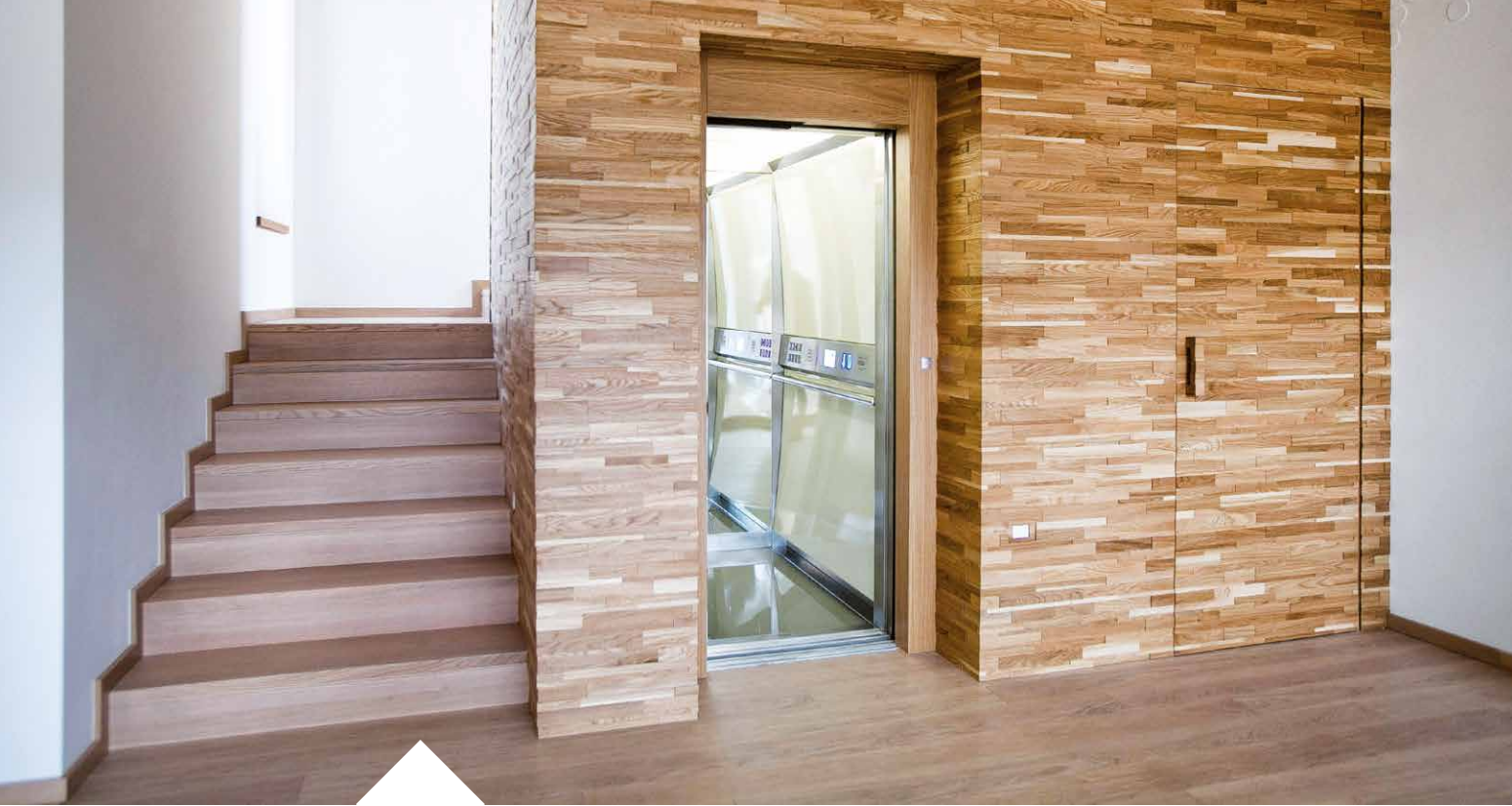


# Design & Materials





Design and engineering are intertwined in every KLEEMANN project. The collection of textures and materials for cabin design presented here, offers creative tools for solutions of aesthetic excellence that cover all engineering prerequisites and adapt to European Standard EN81-20.



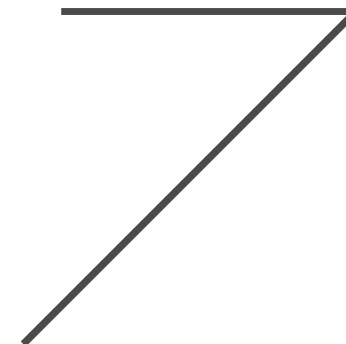
We design passenger experiences



### Creative power

Design has to integrate reality, foresee tomorrow and create an elevated user experience. Rather than thinking of an elevator as a box that moves, we see it as an active social space in a building, that is used and lived by people.

Industrial designer Andreas Zapatinas joined the creative forces of KLEEMANN in 2007 and new technical and aesthetic solutions have been explored. Since then, the experienced KLEEMANN Design Team has build on these fundamental ideas taking KLEEMANN lifts to the next level.







# Design options Cabins



## Purity

Purity cabin, the new addition to the standard range, combines **optimized construction and upgrade of materials** with simultaneous reduction of cost and installation time. **Easy installation from inside the cabin**, minimal design with **no visible screws**, and **new packaging** that minimizes installation time, are just few of the advantages that make Purity a high-quality cabin, ideal for your lift.

### Advantages

- Reduction of installation time by 20%
- Cost reduction thanks to optimized construction
- Improvements in aesthetics & materials

### Optimized construction

- No openings & curves on side panels
- New ceiling with LED panel
- New design for easy replacement of lighting
- No visible screws on ceiling, car operating panels & sill
- Easy installation from inside the cabin
- Same construction for all car sling types
- Reduction of total ceiling height
- New packaging







# Purity

with  
stainless steel

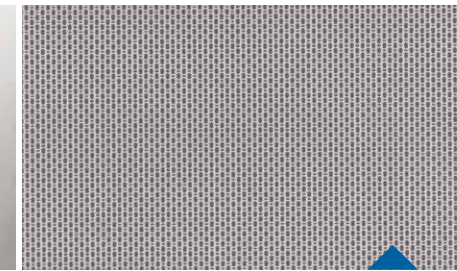
Wall Stainless steel satin  
Floor Vinyl Cement Block  
Handrail K2  
Ceiling 014



## Walls Stainless Steel



Mirror



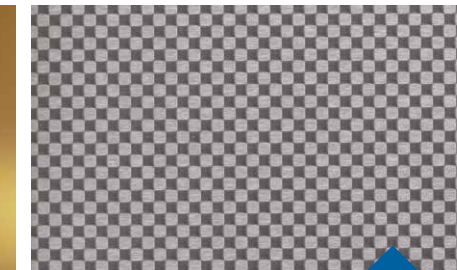
Linen



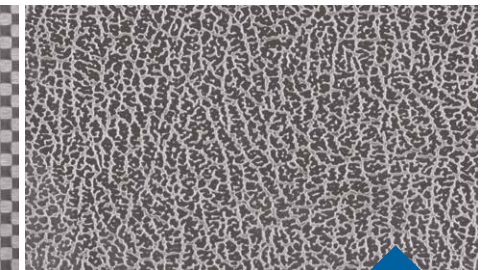
Gold satin



Gold mirror



Checks



12LG



Satin

Also available at  
**KLEEMANN Portal**

Colours may differ slightly from those shown in the brochure, owing to the limitations of the printing process.

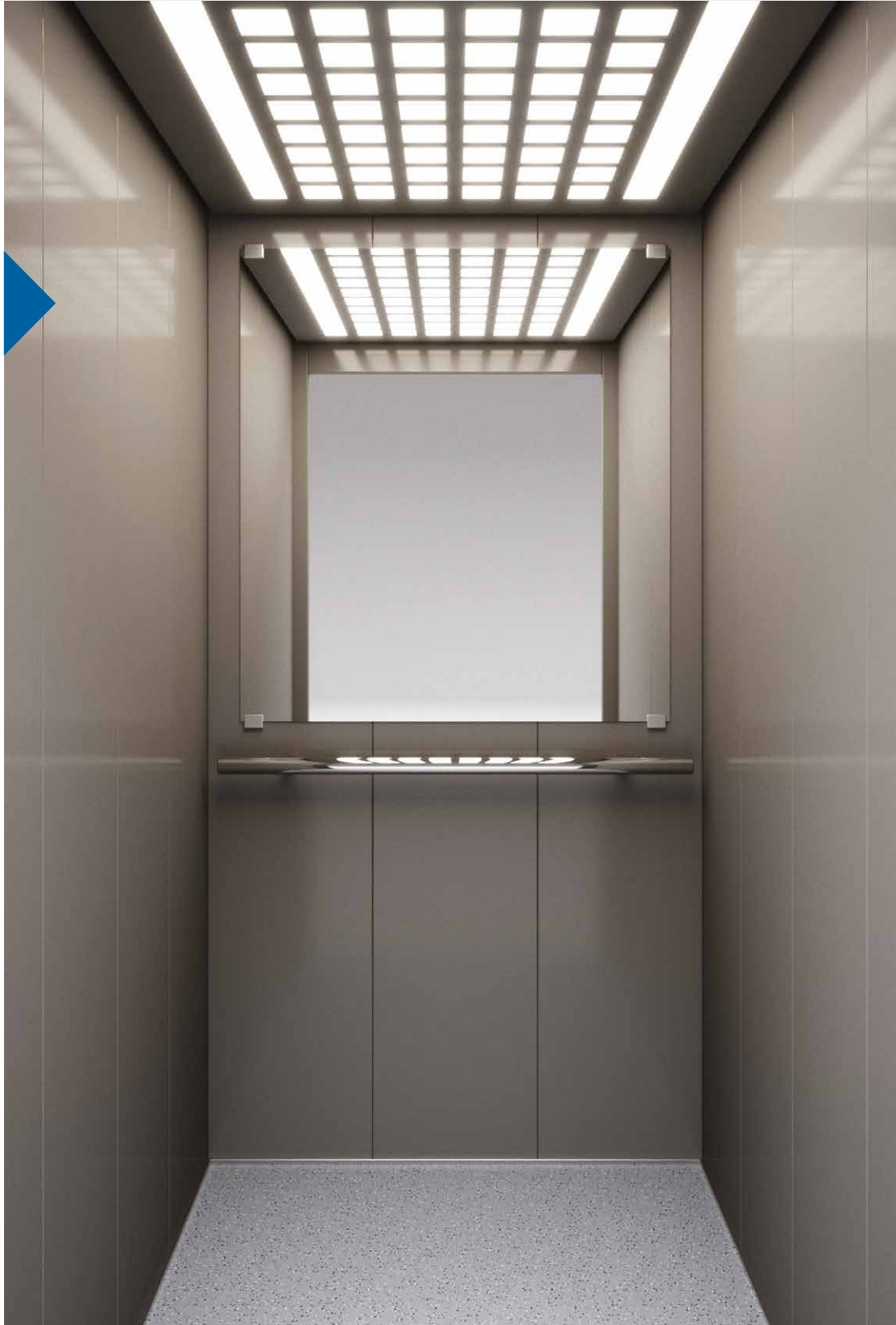
Pictures of the materials illustrate detailed part of each material and not its rendering on the cabin surface.



# Purity

## with skinplate

**Wall** Skinplate F12PPS  
**Floor** Artificial granite  
Regal White  
**Handrail** K2  
**Ceiling** 014



## Walls Skinplate



A67 SMA

A90 GTA

PPS13



PPS93

F12PPS

Also available at  
**KLEEMANN Portal**

Colours may differ slightly from those shown in the brochure, owing to the limitations of the printing process.

Pictures of the materials illustrate detailed part of each material and not its rendering on the cabin surface.





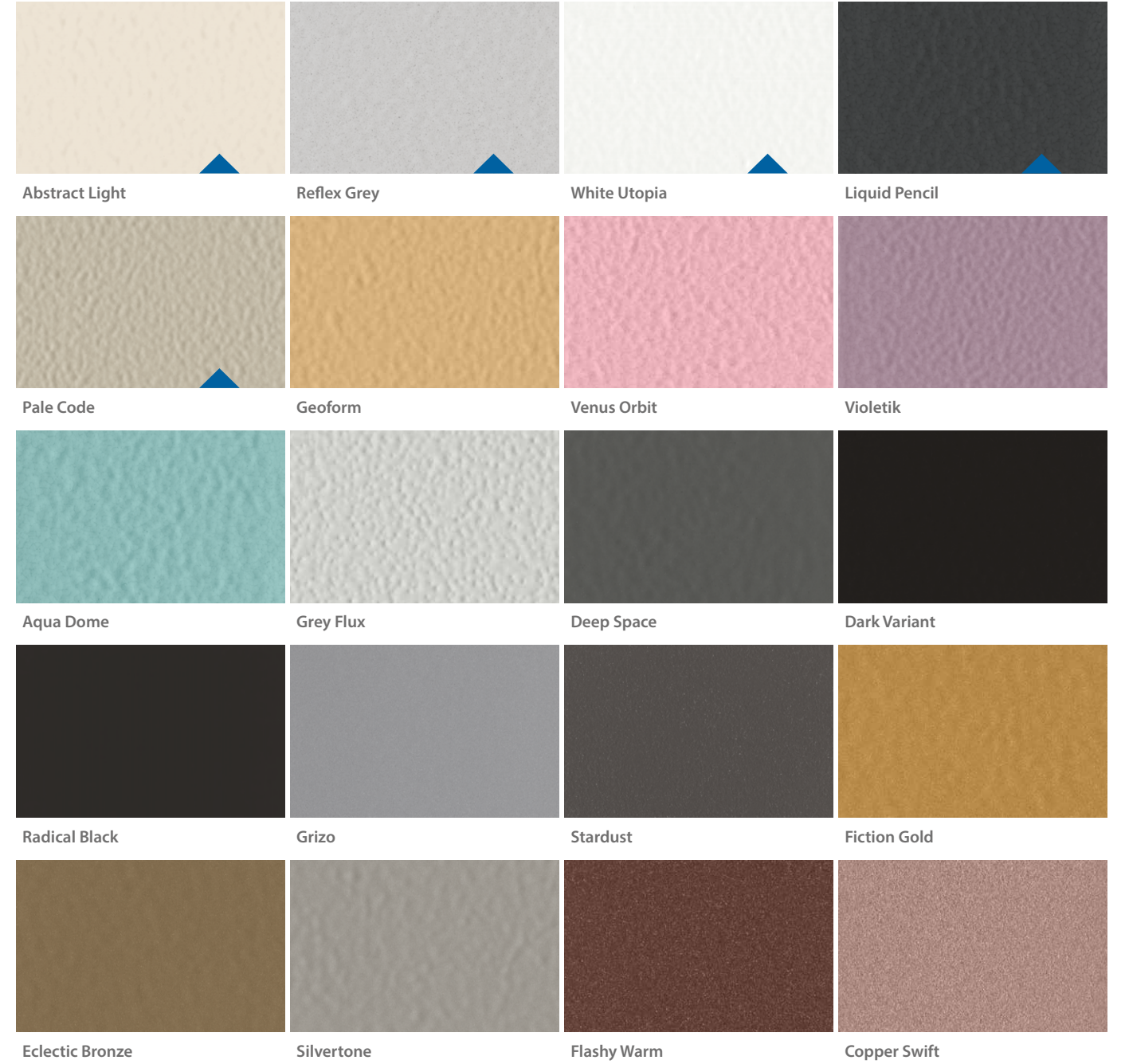
# Purity

with  
paint

Wall Paint White Utopia  
Floor Rubber 6801  
Handrail K3  
Ceiling OLP1 Led Panel



## Walls Paint



Also available at  
**KLEEMANN Portal**

Colours may differ slightly from those shown in the brochure, owing to the limitations of the printing process.

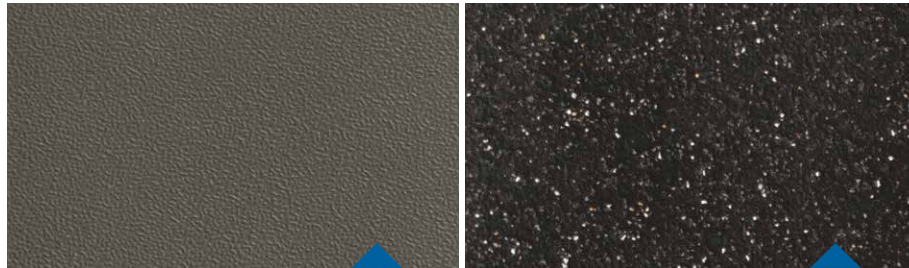
Pictures of the materials illustrate detailed part of each material and not its rendering on the cabin surface.





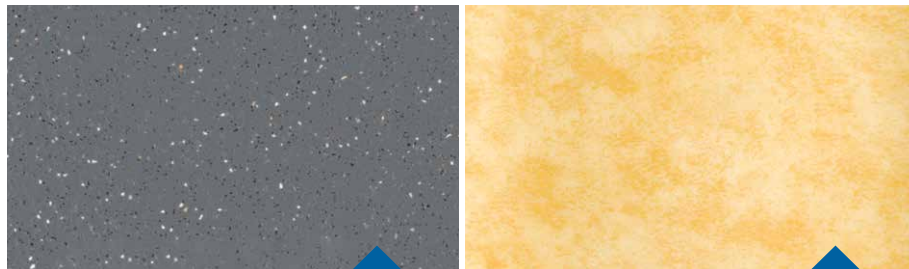
# Purity Interior materials

## Floors Rubbers



6727

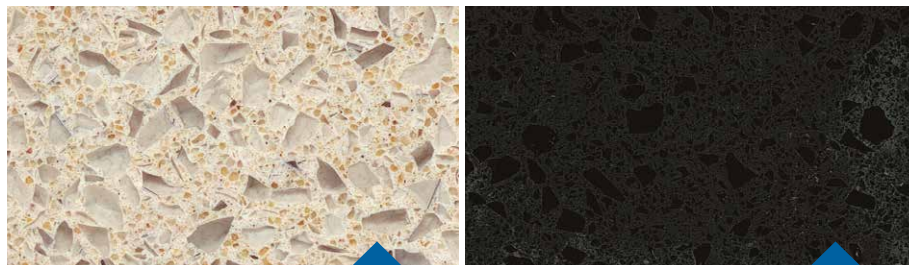
6801



6768

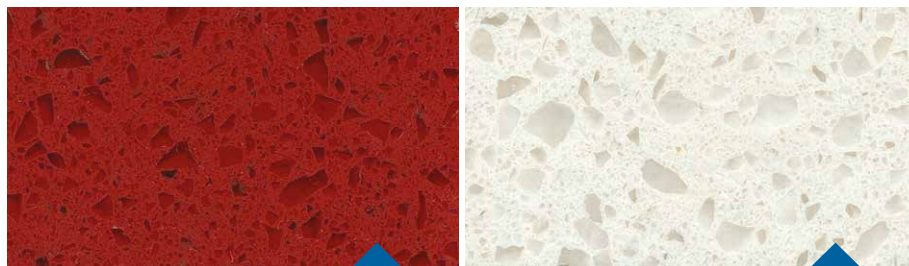
MX19101

## Artificial Granites



Regal Beige

Regal Black



Regal Red

Regal White

## Laminates



8096

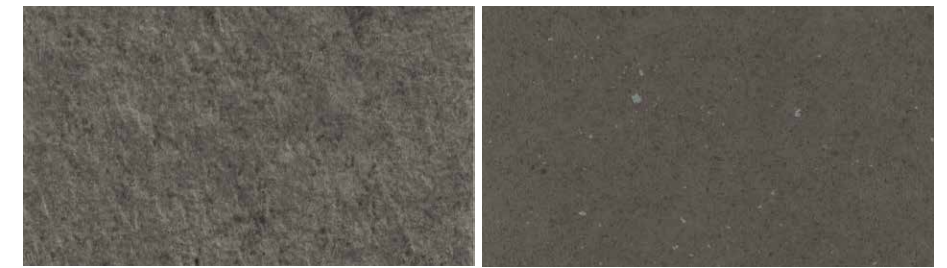
8630

## Vinyl



Concrete Module

Cement Block



Scivaro Grey

Dark Mineral



Oak Luxus



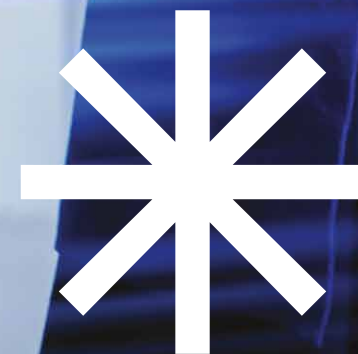
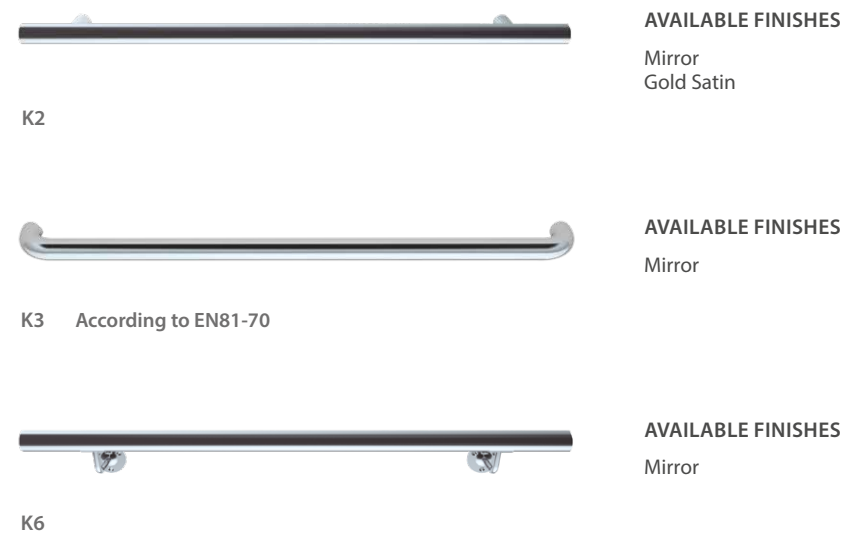
## Ceilings

### FINISHES

Satin  
Mirror  
Gold Mirror  
Gold Satin  
Paint



## Handrails







KLEEMANN range of cabins is wide and versatile featuring cabin solutions that are customizable and can be delivered in record fast time. The collection comprises of cabins adaptable to the project's design specifications that are ideal for residential, commercial use or public buildings.

The varied assortment of materials offered can transform the cabin's design to fit the building ambiance and use. Multiple options for walls, floor and ceiling, offer creative freedom to compile different aesthetic style types.







# A310

A310 cabin is one of the most popular choices for a practical but elegant lift solution. Combining multiple design tools, create a cabin to your own design specifications and take advantage of a wide range of laminate walls, floor and ceiling options. A great choice for residential uses and private residences, this cabin presents a versatile and cost-effective solution.

Wall HP Laminate AB 383  
Floor Rubber 6727  
Handrail K2  
Ceiling 03



## Walls HP Laminate



AB 383

AB 659

AB 1306



DU 8110

HD 2218

MT 2122

Also available at  
[KLEEMANN Portal](#)

Colours may differ slightly from those shown in the brochure, owing to the limitations of the printing process.

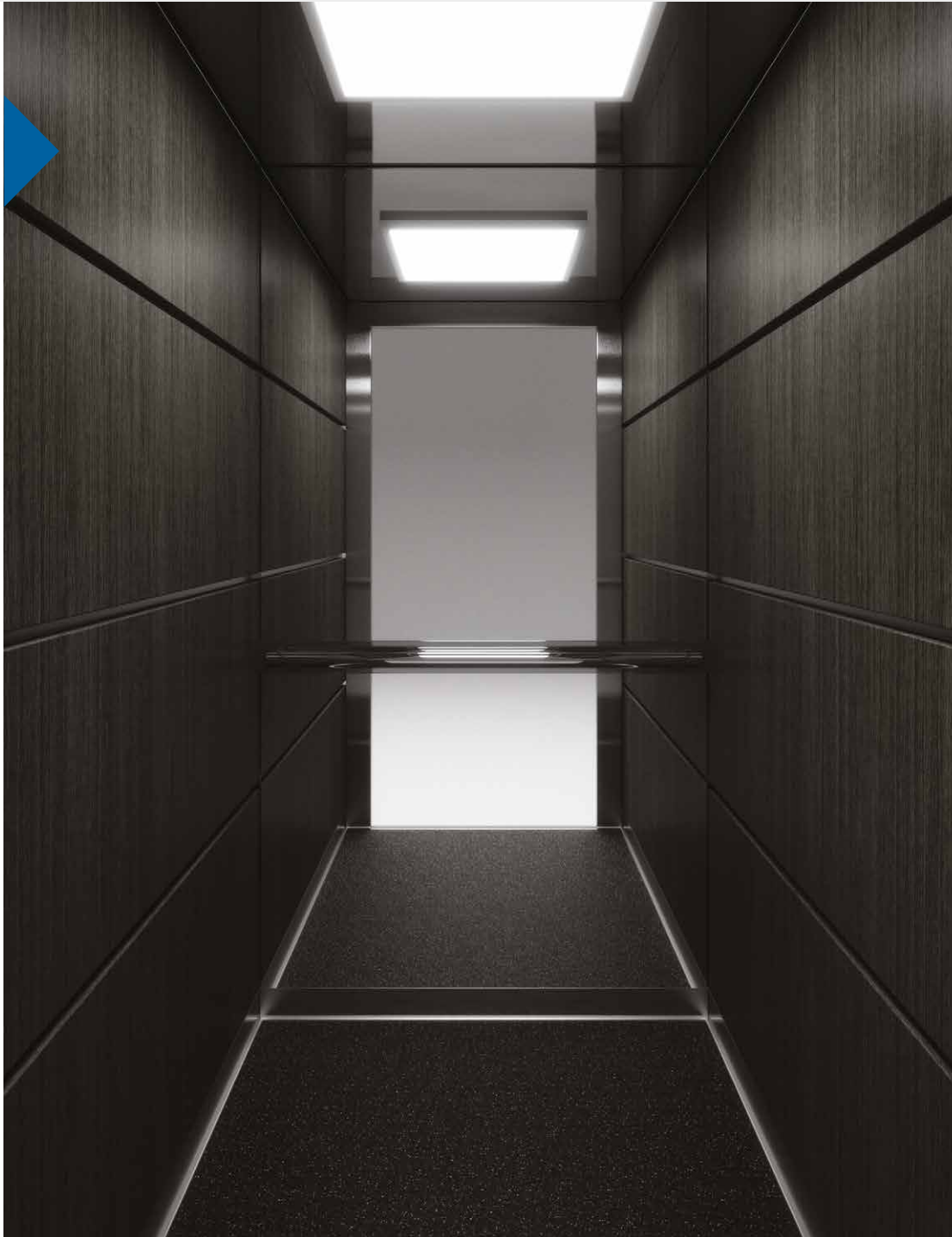
Pictures of the materials illustrate detailed part of each material and not its rendering on the cabin surface.



# A510

Sophistication and intellectual design define the A510 cabin. Available in a range of wooden walls and featuring elegant stainless steel detailing, such as the classic combination of polished oak veneer and stainless steel. This cabin is ideal for commercial uses that demand a touch of finesse.

**Wall** Wood veneer 10.66  
(fire retardant)  
**Floor** Rubber 6801  
**Handrail** K2  
**Ceiling** 010



## Walls Wood veneer (fire retardant)



10.32

10.66

10.94



10.96

Also available at  
[KLEEMANN Portal](#)

Colours may differ slightly from those shown in the brochure, owing to the limitations of the printing process.

Pictures of the materials illustrate detailed part of each material and not its rendering on the cabin surface.





# L310

The L310 cabin offers durability, simplicity and value for money and a range of interior materials that built to last. The popularity of this cabin lies in its functional but elegant design making it an ideal choice for all type of buildings.

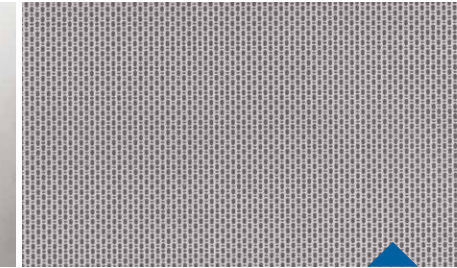
Wall Stainless steel Satin  
Floor Rubber 6768  
Handrail K2  
Ceiling O14



## Walls Stainless Steel



Mirror



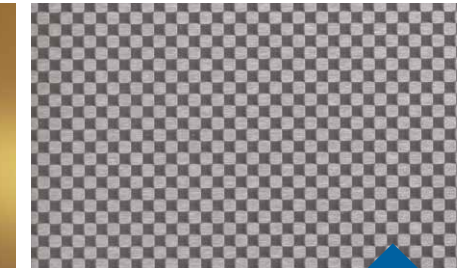
Linen



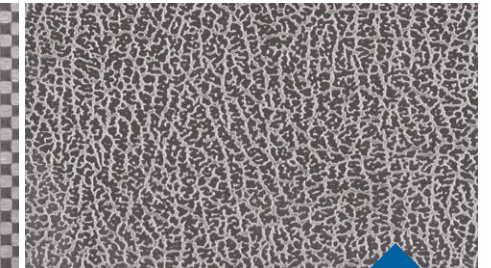
Gold satin



Gold mirror



Checks



12LG



Satin

Also available at  
[KLEEMANN Portal](#)

Colours may differ slightly from those shown in the brochure, owing to the limitations of the printing process.

Pictures of the materials illustrate detailed part of each material and not its rendering on the cabin surface.

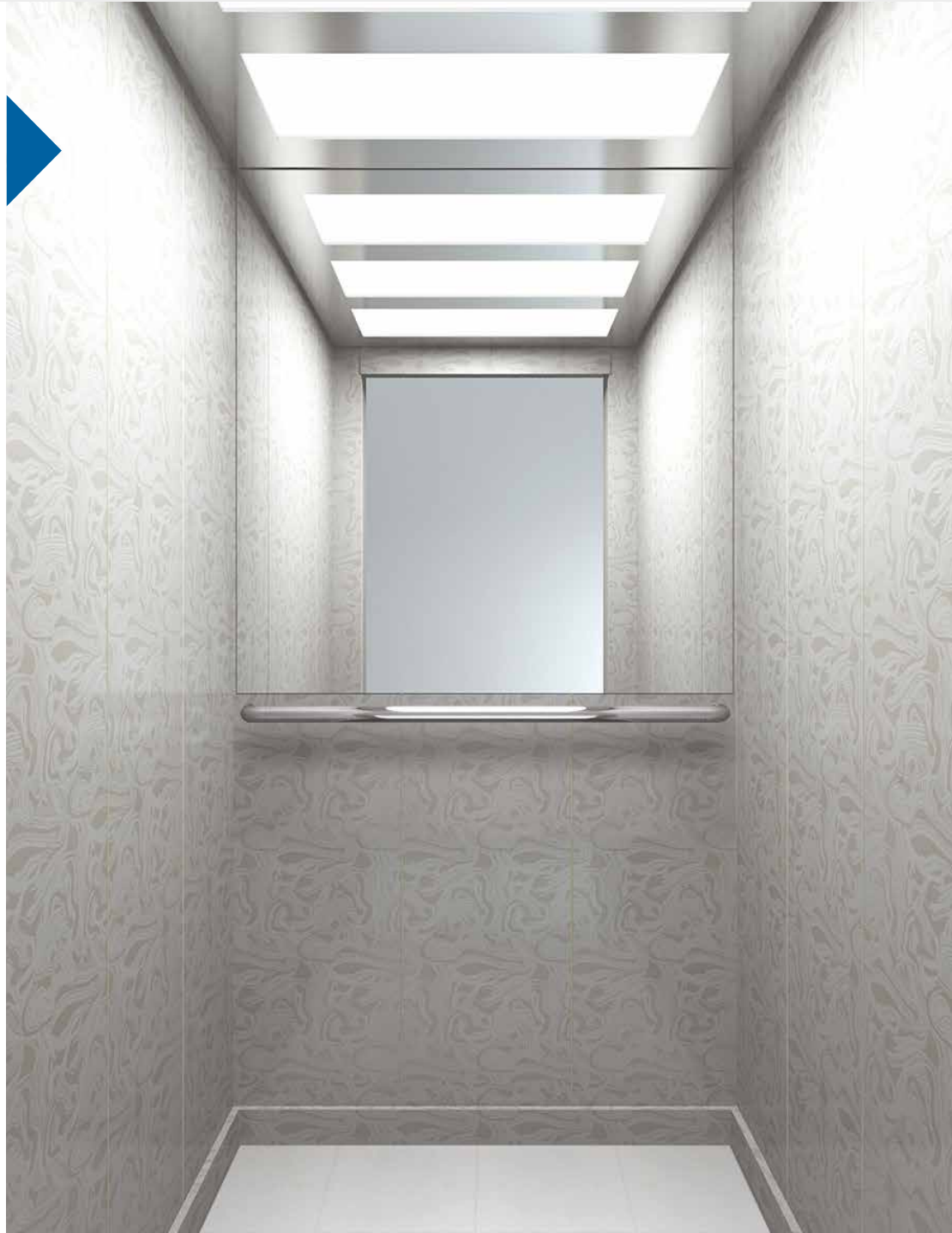




# L320

Integrating simplicity and elegance, the L320 cabin is an excellent choice for a range of residential uses, home solution and offices. Offering modest, functional and contemporary design alongside a wide range of materials and possibilities, this cabin provides a versatile and flexible solution.

**Wall** Skinplate PPS 13  
**Floor** Ceramic tile Greek Pentelikon  
**Handrail** K3  
**Ceiling** O55



## Walls Skinplate



A67 SMA

A90 GTA

B13



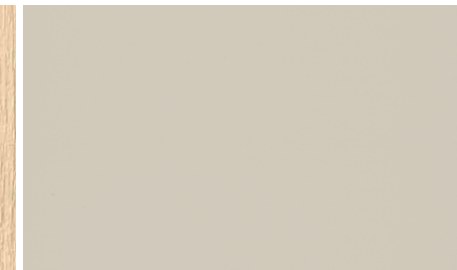
PPS13

PPS93

F12PPS



DL86



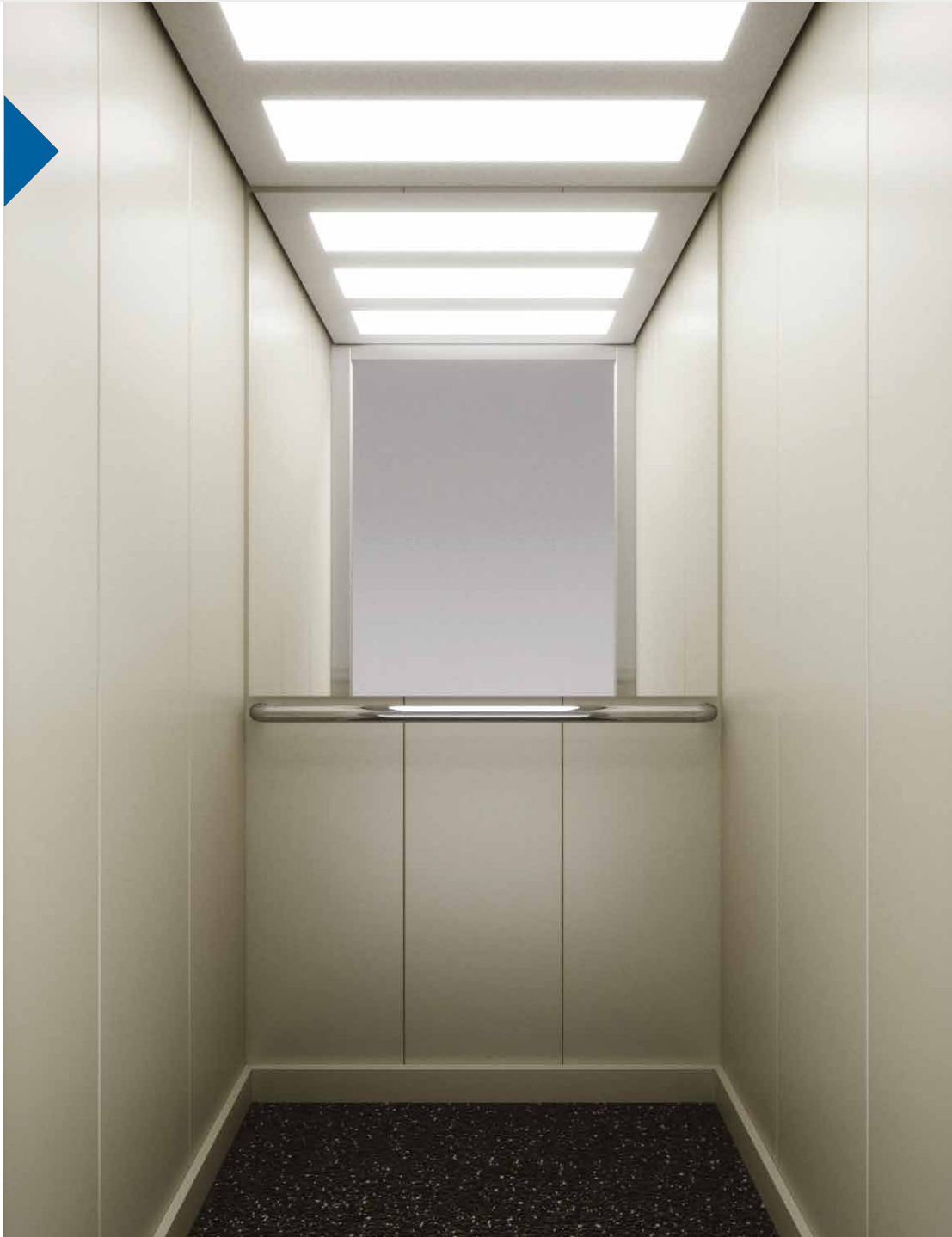
N19SA



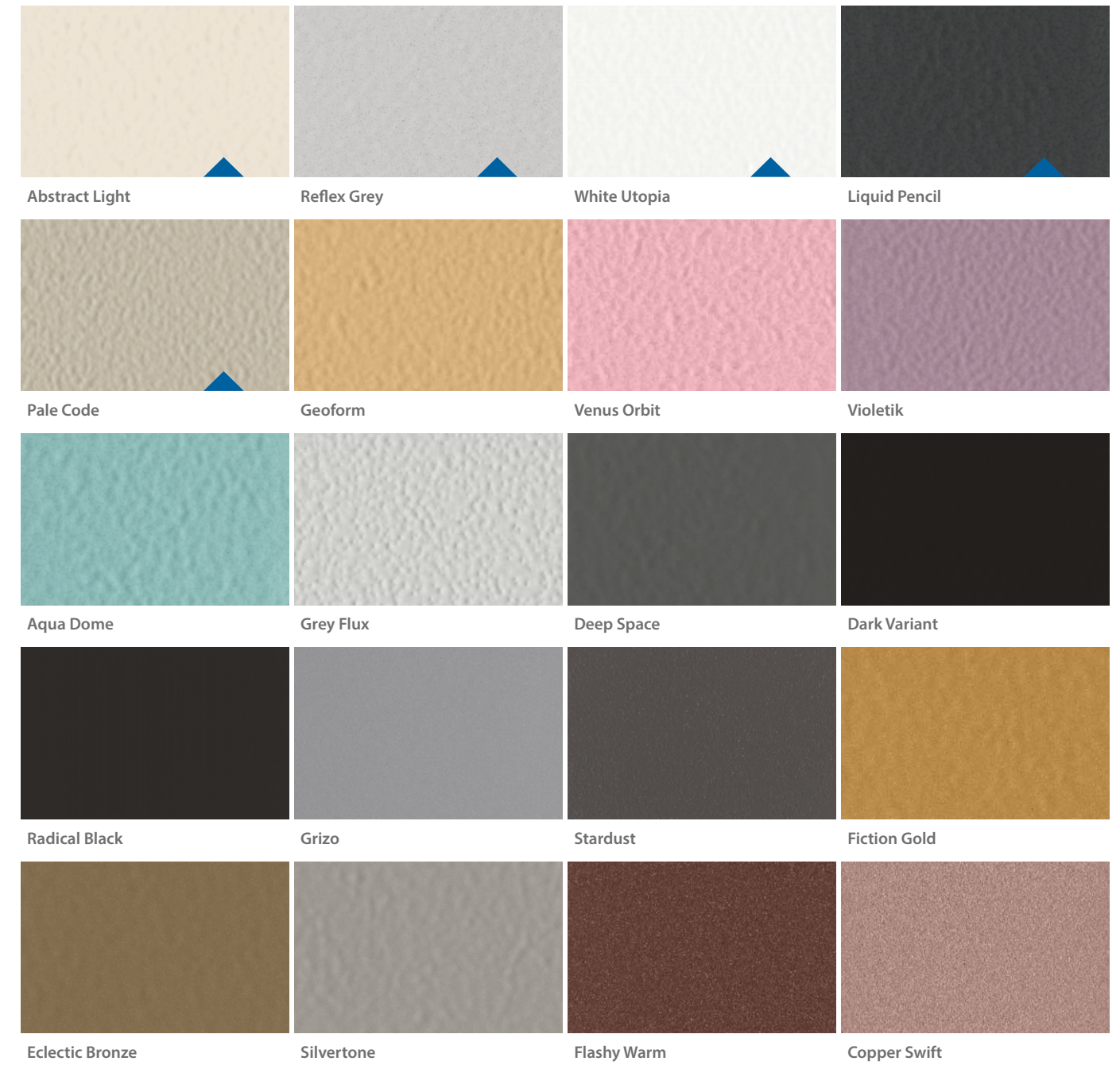
# L330

The L330 is a cost-effective solution that offers a wide range of colors to create a passenger experience that complements the aesthetic of any residential, commercial and public building.

Wall Paint Pale Code  
Floor Rubber 6801  
Handrail K3  
Ceiling O55



## Walls Paint



Also available at  
**KLEEMANN Portal**

Colours may differ slightly from those shown in the brochure, owing to the limitations of the printing process.

Pictures of the materials illustrate detailed part of each material and not its rendering on the cabin surface.





# L510

Transform your building with an explosion of colour and immerse your passengers in an uplifting and playful environment. Featuring glass walls to create a clean, fresh space, the L510 cabin is recommended for residential and commercial uses, hospitals and hotels.

**Wall** Glass B123 White  
**Floor** Laminate 8630  
**Handrail** K2  
**Ceiling** 03



## Walls Glass



Y8W Yellow

K16 Orange

R3W Red



B123 White

YB9W Green

B14W Blue

Colours may differ slightly from those shown in the brochure, owing to the limitations of the printing process.

Pictures of the materials illustrate detailed part of each material and not its rendering on the cabin surface.





# L530

Versatility and simplicity define the L530 cabin. Suitable for both commercial and residential uses, this cabin is ideal for luxury private residences, commercial buildings and offices. Choose from a multitude of materials and finishes, from sumptuous interiors of stainless steel, to sleek contemporary spaces, and create a truly unique space.

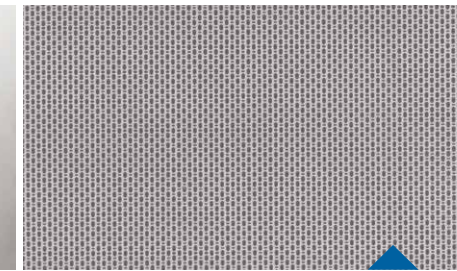
**Wall** Stainless steel Satin  
**Floor** Artificial granite  
Regal Black  
**Handrail** K2  
**Ceiling** 015



## Walls Stainless Steel



Mirror



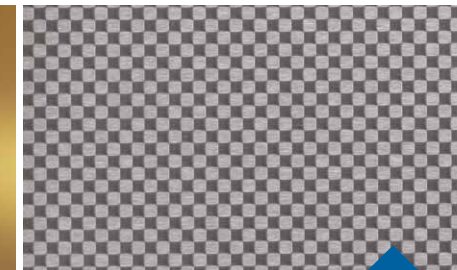
Linen



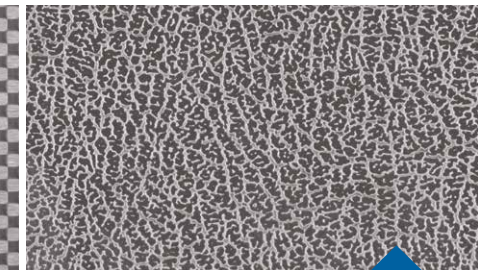
Gold satin



Gold mirror



Checks



12LG



Satin

Also available at  
**KLEEMANN Portal**

Colours may differ slightly from those shown in the brochure, owing to the limitations of the printing process.

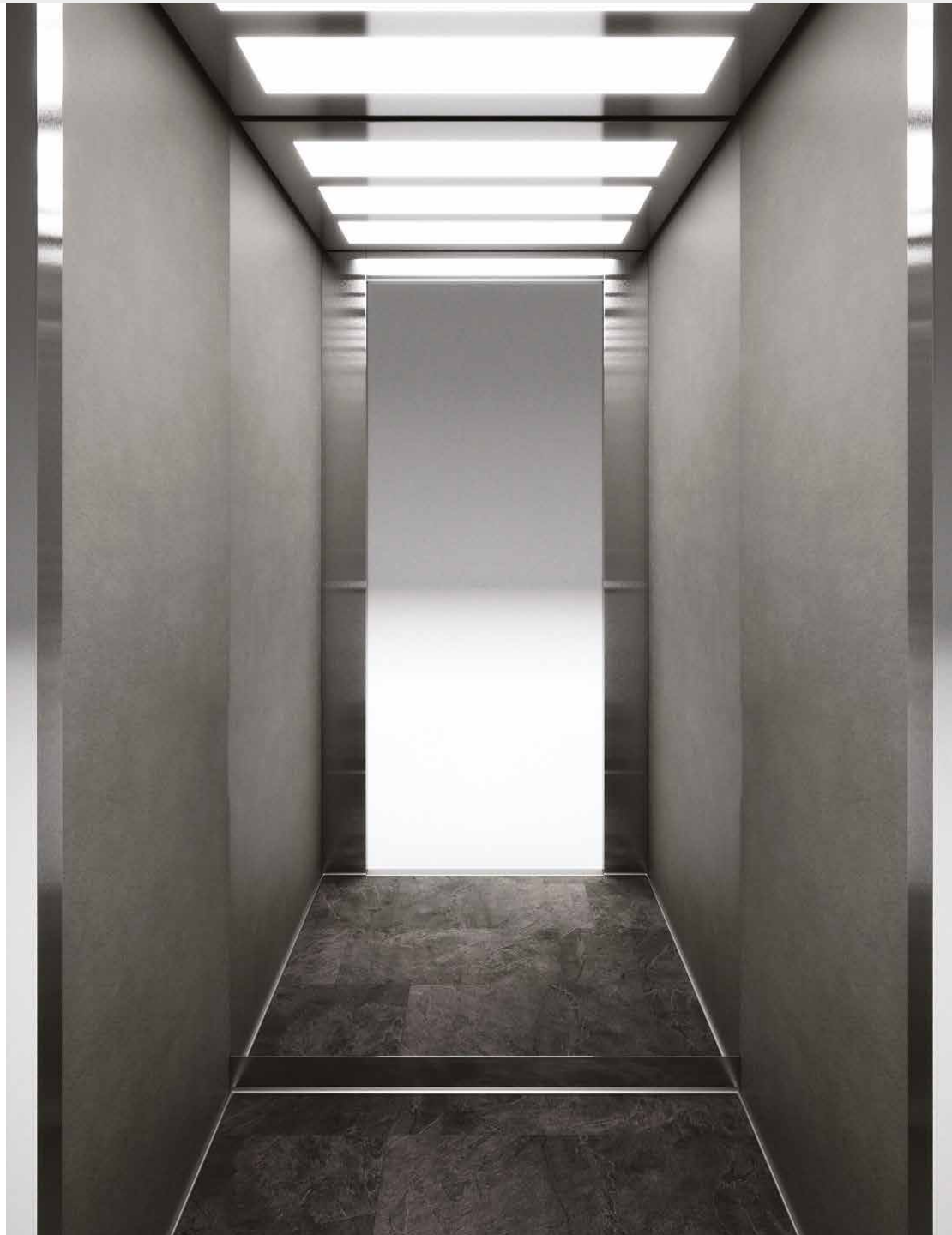
Pictures of the materials illustrate detailed part of each material and not its rendering on the cabin surface.



# T120

The exclusive design of the T120 cabin offers the passenger comfort and style. The design seamlessly fuses contemporary and futuristic elements to deliver a warm and inviting space, ideal for residential uses, home solutions and hotels.

Wall Concrete Elea Grey  
Floor Vinyl Scivaro Grey  
Ceiling 055



## Walls Wood like



Smooth Sand

Hacienda Wood

## Concrete like



Elea Grey

Lime Light

## Monochrome Steel like



Oceanic Blue

Colours may differ slightly from those shown in the brochure, owing to the limitations of the printing process.

Pictures of the materials illustrate detailed part of each material and not its rendering on the cabin surface.





# T310

Featuring unique design that creates a feeling of space through inspiring, vivid colours and a curved ceiling and walls, the passenger experiences a sense of freedom during each and every ride. The spaciousness of this cabin makes it ideal for use in commercial buildings.

**Wall** Stainless steel Satin  
**Floor** Artificial Granite  
Regal Black  
**Handrail** K2  
**Ceiling** 015



Designed by  
Andreas  
Zapatinas

## Walls Paint



Colours may differ slightly from those shown in the brochure, owing to the limitations of the printing process.

Pictures of the materials illustrate detailed part of each material and not its rendering on the cabin surface.

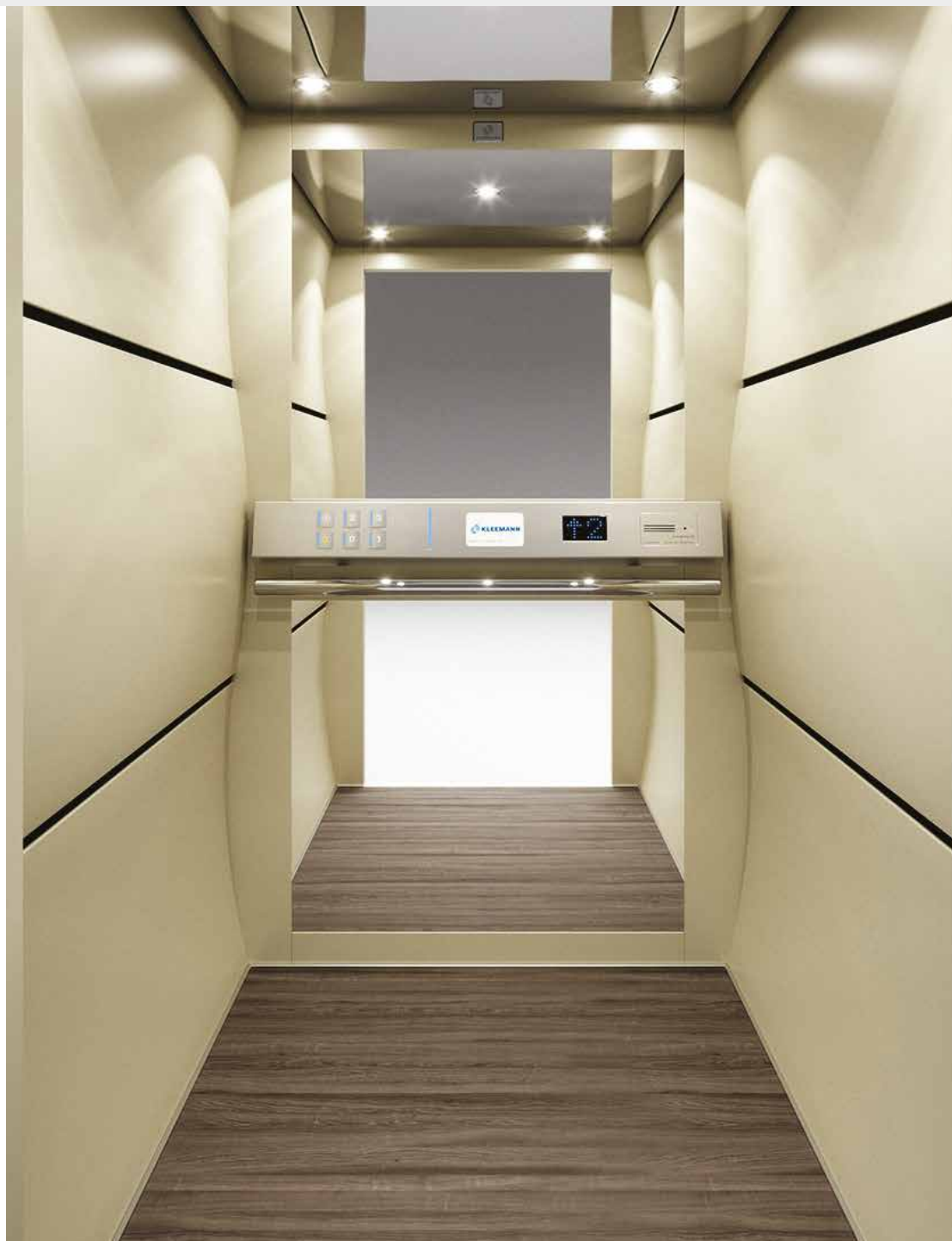




# T710

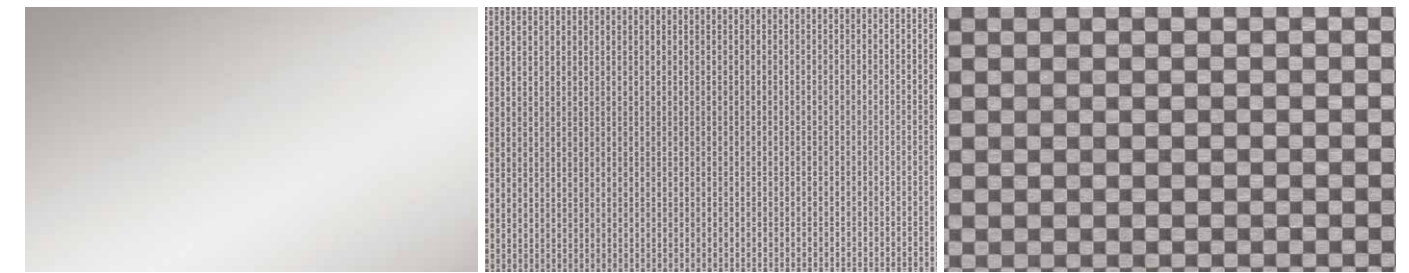
The T710 cabin fuses futuristic design with luxury to offer a truly exceptional passenger experience. The pioneering design, which features smooth lines and a curved ceiling and walls, welcomes the passenger to next-generation lift travel. The stylishly sleek cabin is the ideal choice for private residences, commercial buildings and hotels.

Wall Paint Geoform  
Floor Laminate 8096  
Handrail K2  
Ceiling 07



Designed by  
Andreas  
Zapatinas

## Walls Stainless Steel



Mirror

Linen

Checks



12LG

Satin

Gold satin



Gold mirror

Colours may differ slightly from those shown in the brochure, owing to the limitations of the printing process.

Pictures of the materials illustrate detailed part of each material and not its rendering on the cabin surface.

## Paint



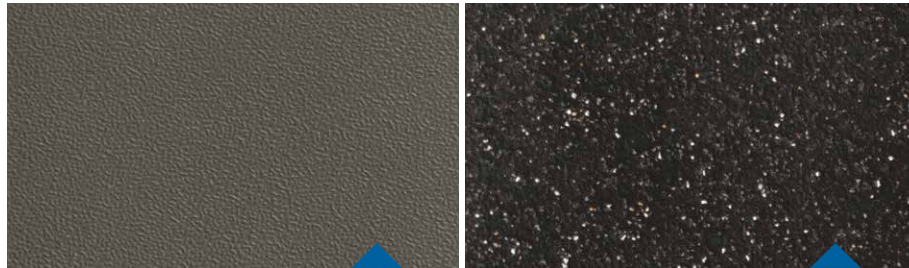




# Range

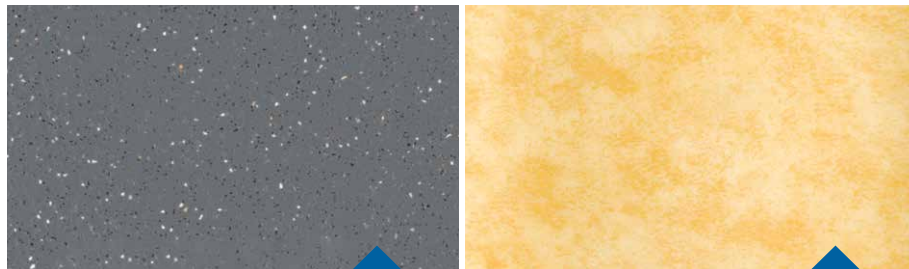
## Interior materials

### Floors Rubbers



6727

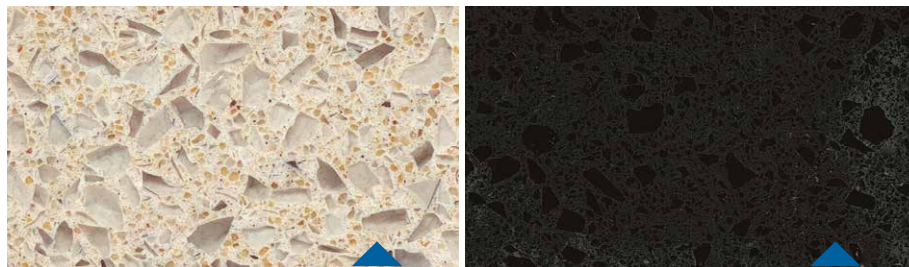
6801



6768

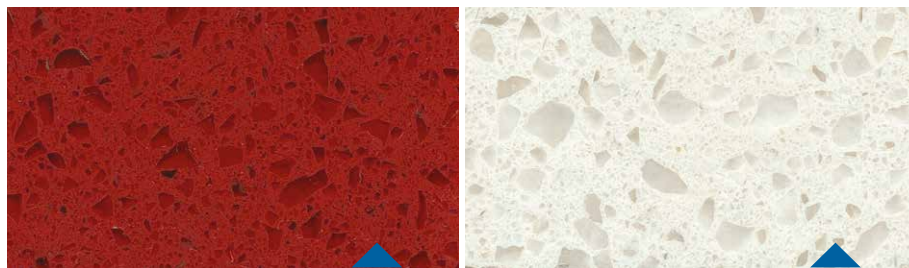
MX19101

### Artificial Granites



Regal Beige

Regal Black



Regal Red

Regal White

### Laminates



8096

8630

### Ceramic Tiles



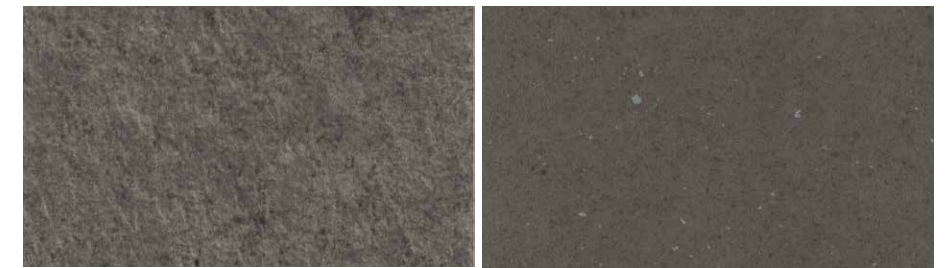
GP5 Nero

### Vinyl



Concrete Module

Cement Block



Scivaro Grey

Dark Mineral



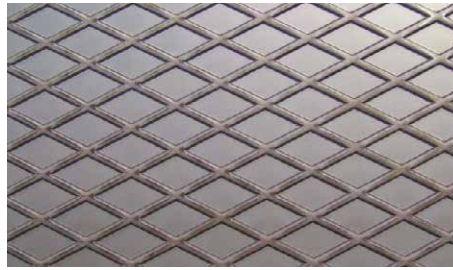
Oak Luxus

Also available at  
[KLEEMANN Portal](#)

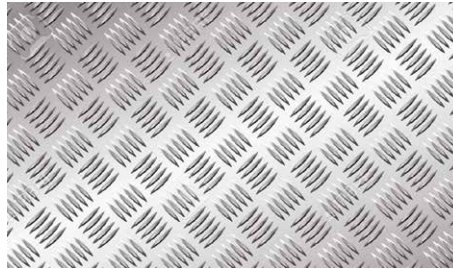
Colours may differ slightly from those shown in the brochure, owing to the limitations of the printing process.

Pictures of the materials illustrate detailed part of each material and not its rendering on the cabin surface.

Stainless Steel  
Checkerplate



Aluminium  
Checkerplate



## Ceilings

### FINISHES

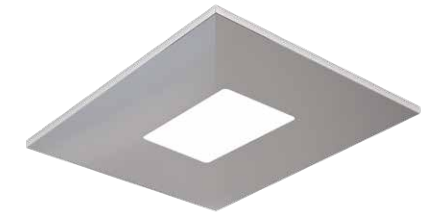
Satin  
Mirror  
Gold Mirror  
Gold Satin  
Paint



03



07



010



014



015



055



OLP1 (Led Panel)

## Handrails



K2

### AVAILABLE FINISHES

Mirror  
Gold Satin



K3 According to EN81-70

### AVAILABLE FINISHES

Mirror



K6

### AVAILABLE FINISHES

Mirror





# Design options Doors



## Automatic doors



Automatic  
Big Vision

AVAILABLE FINISHES

Stainless steel  
Skinplate



Automatic  
Full Glass

AVAILABLE FINISHES

Stainless steel  
Skinplate



Automatic  
Full

AVAILABLE FINISHES

Stainless steel  
Skinplate  
Paint

## Semi-automatic doors



Classic



C310



C520



M310



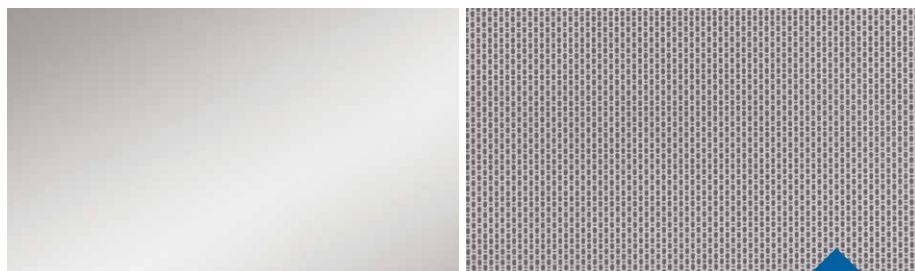
Blind

AVAILABLE FINISHES  
FOR ALL SEMI-AUTOMATIC DOORS

Stainless steel  
Skinplate  
Paint

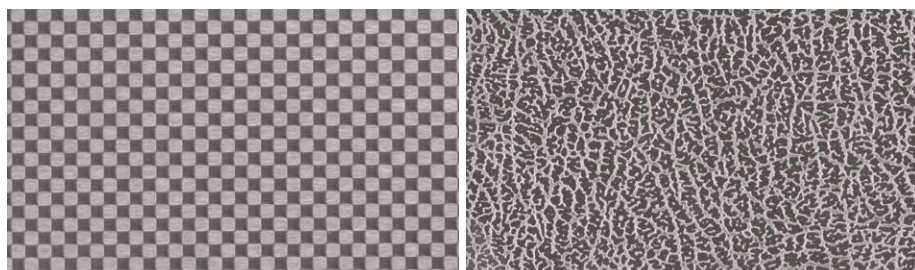


## Finishes Stainless Steel



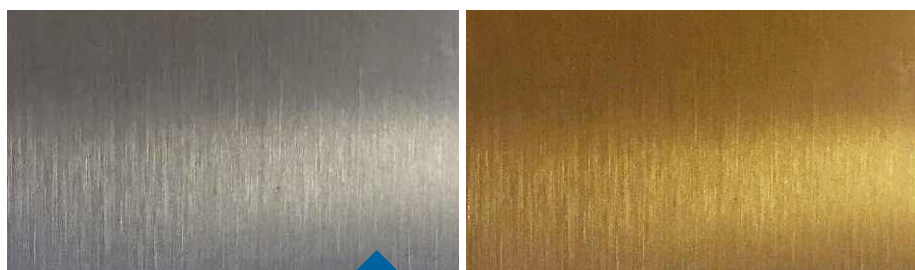
Mirror

Linen



Checks

12LG



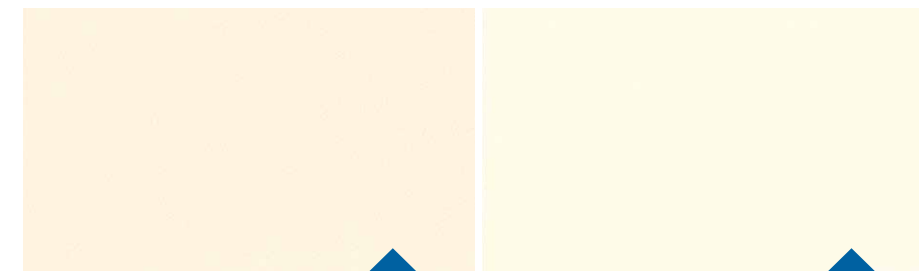
Satin

Gold satin



Gold mirror

## Skinplate



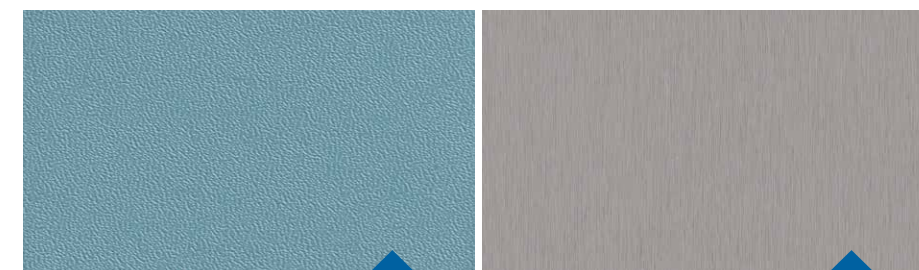
A67 SMA

A90 GTA



PPS13

PPS93



B13

F12PPS

## Paint



Abstract Light

Reflex Grey

White Utopia

Liquid Pencil

Pale Code



Geoform

Venus Orbit

Violetik

Aqua Dome

Grey Flux



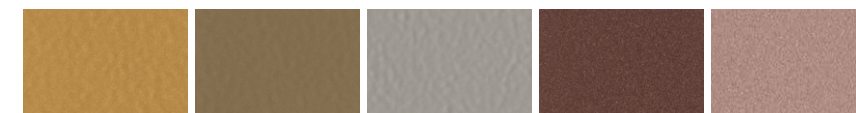
Deep Space

Dark Variant

Radical Black

Grizo

Stardust



Fiction Gold

Eclectic Bronze

Silvertone

Flashy Warm

Copper Swift

Colours may differ slightly from those shown in the brochure, owing to the limitations of the printing process.

Pictures of the materials illustrate detailed part of each material and not its rendering on the cabin surface.

Also available at  
**KLEEMANN Portal**



# Design options

## Operating panels





# Flush Mounted



Landing Indicator

P95-902 DIMENSIONS  
(W) 230 mm x (D) 20 mm x (H) 92 mm



Car Operating Panel

AKC BES DIMENSIONS  
(W) 200 mm x (H) 2000 mm



Landing Operating Panel

AKL DIMENSIONS  
(W) 85 mm x (H) 265 mm

## Characteristics

- Available also with Dot Matrix display
- Compatible also with buttons B37R, MT-42, RT-42. Antibacterial and touchless buttons are also available
- Stainless steel finishing as standard (special upon request)
- Engrave in LOP as option



# Surface Mounted



Landing Indicator

GN-SH301 DIMENSIONS  
(W) 250 mm x (D) 22 mm (H) 87 mm



Car Operating Panel

GN-SC300 DIMENSIONS  
(W) 200 mm x (D) 24 mm (H) 1000 mm



Landing Operating Panel

GN-SL300 DIMENSIONS  
(W) 87 mm x (D) 22 mm (H) 250 mm

## Characteristics

- Available also with Dot Matrix display
- Compatible also with buttons B37R
- Black plexiglass finishing



# Surface Mounted



Landing Indicator

FTHL SLIM DIMENSIONS  
(W) 230 mm x (D) 10 mm x (H) 108 mm



Car Operating Panel

DKC DIMENSIONS  
(W) 200 mm x (D) 24 mm (H) 1000 mm



Landing Operating Panel

FTL INOX SLIM DIMENSIONS  
(W) 108 mm x (D) 10 mm x (H) 230 mm



# Door Frame



Door frame solution with no display



Door frame solution with display

## Characteristics

- Available also with TFT display
- Compatible also with buttons B37R
- Black plexiglass finishing





# Buttons



B37Q  
according to EN81-70

DIMENSIONS  
(W) 37 mm x (H) 37 mm



MT42

DIMENSIONS  
(W) 39 mm x (Y) 39 mm



MT42  
according to EN81-70

DIMENSIONS  
(W) 39 mm x (Y) 39 mm



B37R  
according to EN81-70

DIMENSIONS  
ø 30 mm



RT42

DIMENSIONS  
ø 30 mm



RT42  
according to EN81-70

DIMENSIONS  
ø 30 mm

# Hygiene Line Solutions



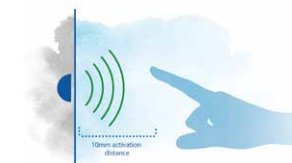
COMPATIBLE ONLY

with AKC BES Car Operating Panels  
and AKL Landing Operating Panels



## Touchless buttons

An 100% antibacterial solution that operates by infrared induction which detects the call's activation.



## Anti-Bacterial buttons

Blue Line KLH-42R buttons with nano-silver coating, that can provide antibacterial and antifungal protection.





Custom  
Solutions





Custom solutions  
Panoramic cabins



## Panoramic Cabins

Elevating the architectural style of any building by upgrading interior or exterior views. KLEEMANN fully customizable panoramic cabins are the ideal solution for hotels, shopping malls, office buildings and other active public spaces.



Curved Panoramic



Mushroom Panoramic



Polygonal Panoramic



Round Panoramic



Square Panoramic

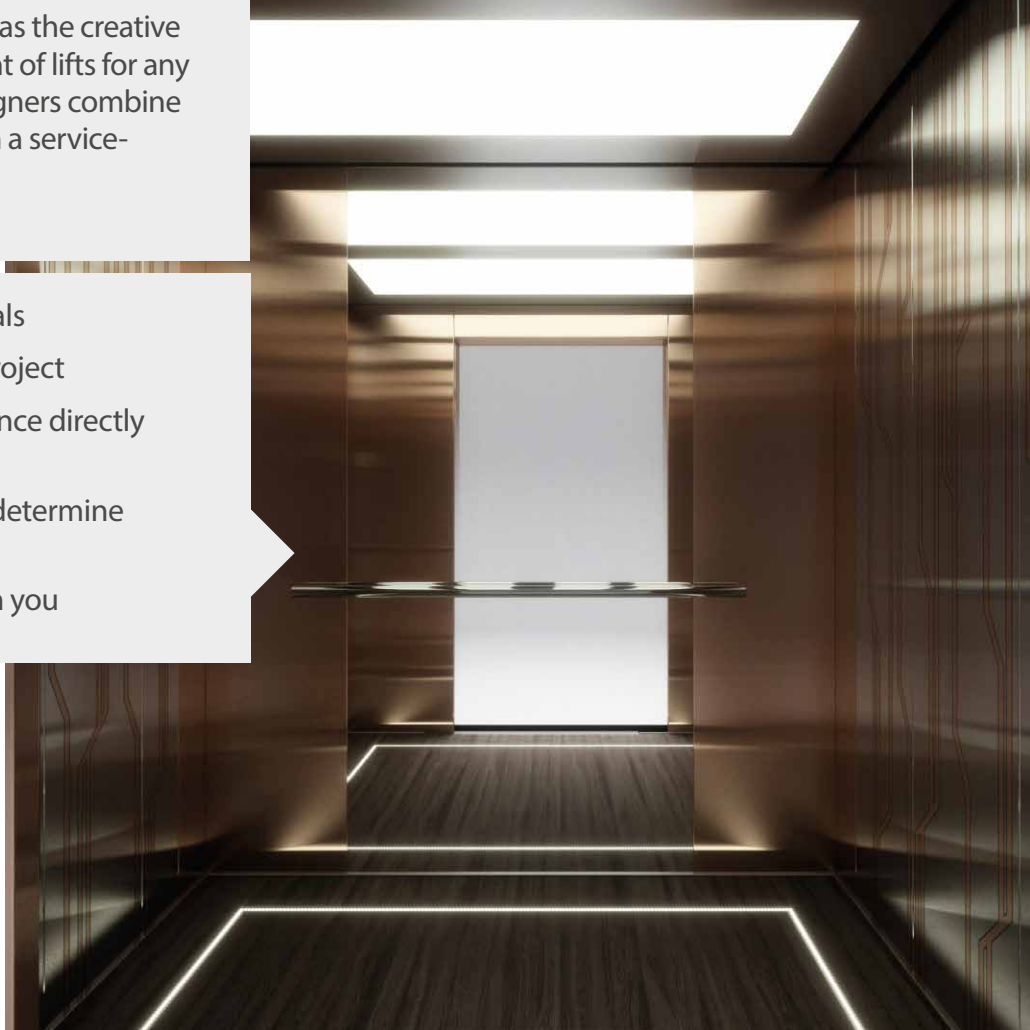




## KLEEMANN Design Services

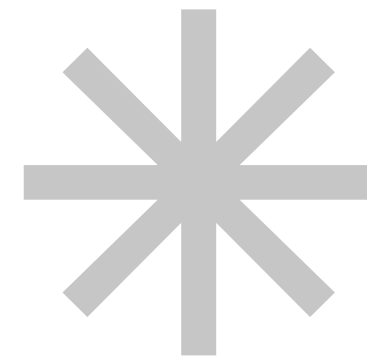
A special Design Team serves as the creative force behind the development of lifts for any challenging project. Our designers combine solution-oriented design with a service-driven approach.

- High quality virtual proposals
- Digital animation of your project
- Architectural design assistance directly with you
- Architectural assistance to determine materials
- On site visit / feedback from you



## Customized Design

KLEEMANN enjoys a favorable worldwide reputation for its customized design expertise. KLEEMANN offers pre-engineered or fully-customized elevators, to perfectly fit in each and every project. Being vertically integrated, KLEEMANN designs and manufactures lifts, in a way that enhances its expertise and flexibility to respond reliably, quickly, precisely, and cost effectively to customers specifications.



Contact our Design Team to transform your building

[design@kleemannlifts.com](mailto:design@kleemannlifts.com)





KLEEMANN has a worldwide presence in over 100 countries with local presence in key market points. It stands out for its product range, high quality and control standards, world class design and for its expertise in custom made solutions. Constantly monitoring the global market trends, the company continues to innovate, grow, develop, and improve while consistently remaining in tune with its global character.



**KLEEMANN**  
Your 1<sup>st</sup> Choice in Lifts

KLEEMANN HELLAS SA  
Kilkis Industrial Area  
P.O. BOX 25, Kilkis, 611 00 - Greece  
G.E.M.I. 14486435000

Colours may differ slightly from those shown in the brochure, owing to the limitations of the printing process. Pictures of the materials illustrate detailed part of each material and not its rendering on the cabin surface.

While every effort has been made to ensure information accuracy, KLEEMANN bears no responsibility for typographic errors or omissions.